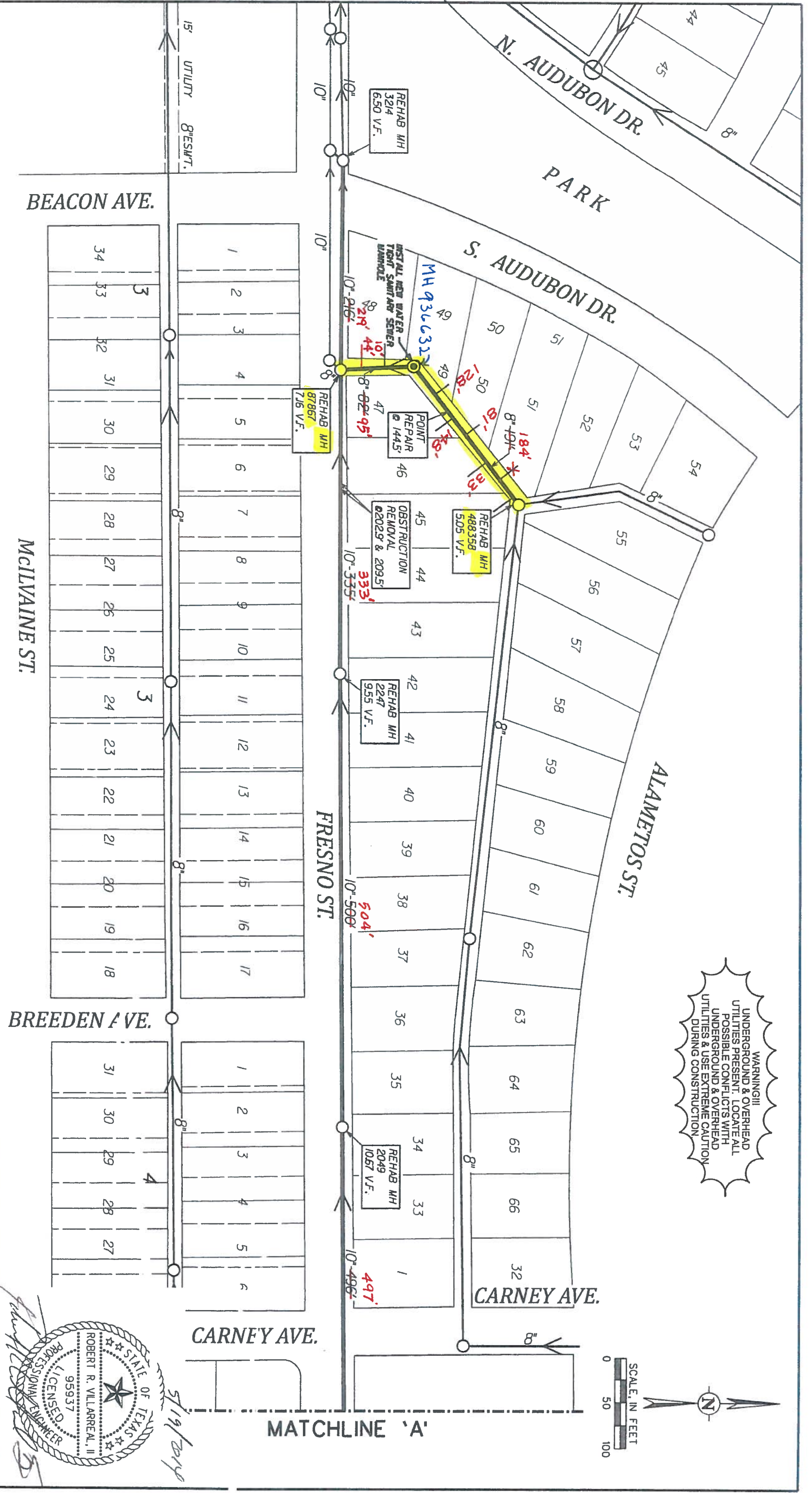
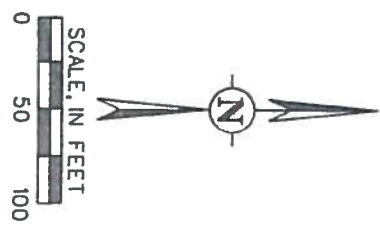


WARNING!!!
 UNDERGROUND & OVERHEAD UTILITIES PRESENT. LOCATE ALL POSSIBLE CONFLICTS WITH UNDERGROUND & OVERHEAD UTILITIES & USE EXTREME CAUTION DURING CONSTRUCTION.



Contractor must notify and/or contact SAMS Inspections at 233-3500 and SAMS Engineering at 233-3493 48 hours before any of the following activities take place.
 1. Notification of Pre-Television Inspection.
 2. Notification of Bypass Pumping setup operations.
 3. Notification of the Pipe installation.

13-4711 PLAN OF RECORD Job Completion Date: August 28, 2014

NOTE: CONTRACTOR MUST VERIFY ALL DEPTHS, DISTANCES, PIPE SIZES AND GRADES BEFORE START OF CONSTRUCTION. (MSPJ)

NOTE: CONTRACTOR TO COORDINATE WITH RESIDENCE PRIOR TO COMMENCING CONSTRUCTION.

219 L.F. OF 8" PIPE
 273 L.F. OF 8" PIPE
 157 L.F. OF 10" PIPE
 1553

LEGEND

PROF. SAN SEWER	8" SS
EXISTING SAN SEWER	8" CLW
WATER MAIN	2" G
GAS MAIN	24" ST
STORM SEWER	UT
EXISTING UTILITY POLE	UT
UNDERGROUND ELEC.	UT
UNDERGROUND TELE.	UT

JOB NO. 13-4711 W.O. #19

2013 SMALL DIA REHAB PROGRAM- PROJECT 8

FRESNO ST

DATE: May 19, 2014 SHEET 2 OF 4

DR. A.F.D. SAN ANTONIO WATER SYSTEM
 CIG. REV.
 BLK. MAP 159-596

REPLACEMENT & IMPROVEMENTS

STATE OF TEXAS
 ROBERT R. VILLARREAL, II
 95937
 PROFESSIONAL ENGINEER

5/19/2014

PROF. SAN SEWER	8" SS
EXISTING SAN SEWER	8" CLW
WATER MAIN	2" G
GAS MAIN	24" ST
STORM SEWER	UT
EXISTING UTILITY POLE	UT
UNDERGROUND ELEC.	UT
UNDERGROUND TELE.	UT

SEE SHEET 4 FOR NOTES AND LEGEND

SMART COVER

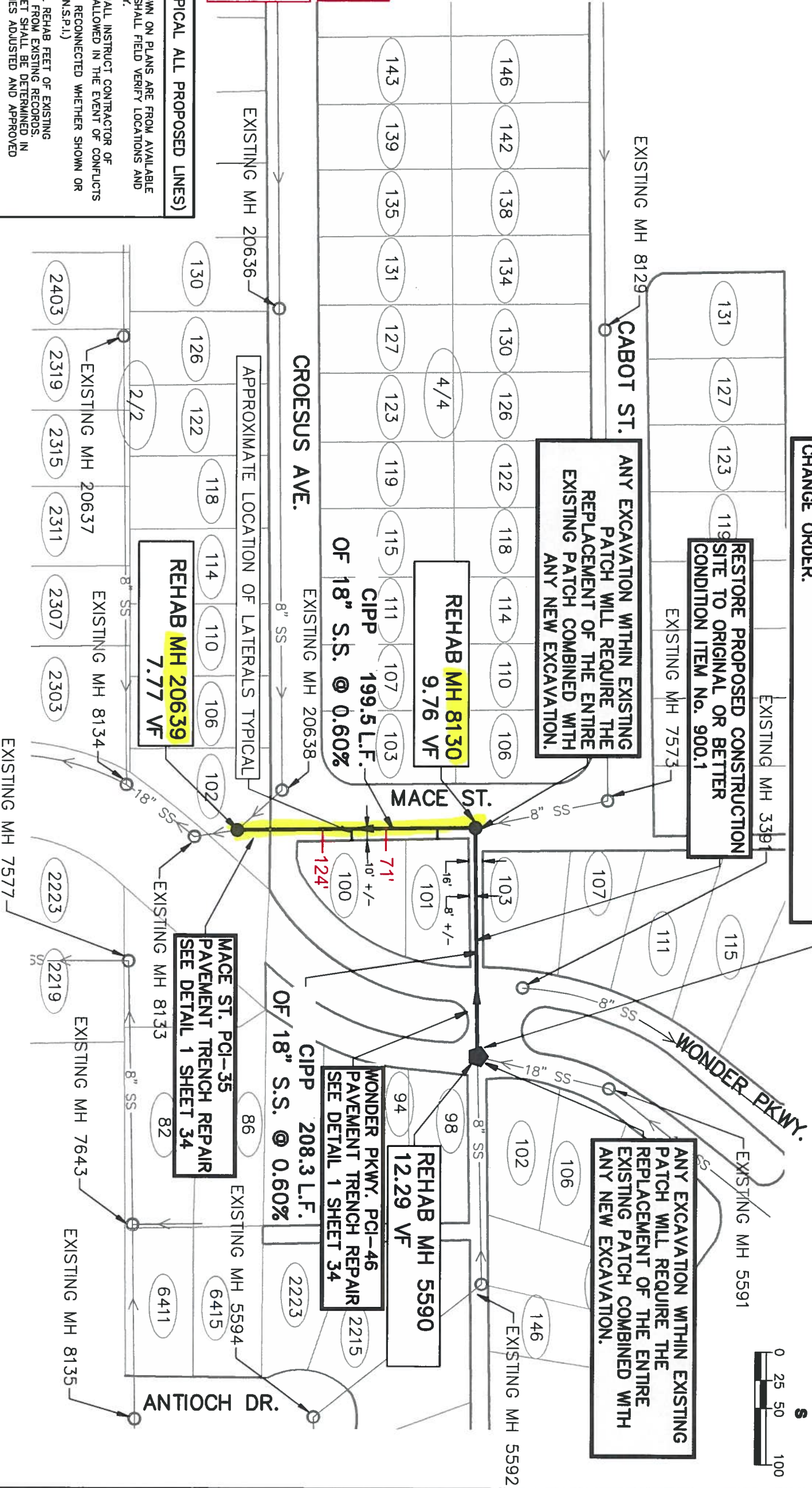
NOTIFY SHAWN DORN AT 210-233-3560 A MINIMUM OF 72 HOURS, NOT COUNTING WEEKENDS OR SAWS HOLIDAYS, BEFORE WORKING ON THE PIPE OR MANHOLE, IN ORDER TO HAVE SAWS REMOVE SMART COVER. ANY DAMAGE DONE TO THE SMART COVER, WILL BE CHARGED TO THE CONTRACTOR THROUGH A CHANGE ORDER.

Note: Sewer laterals were reconnected not replaced

Note: Underlined lateral distance to manhole lateral is connected to main is not known for certain.

SPECIAL NOTES (TYPICAL ALL PROPOSED LINES)

- LATERAL LOCATIONS SHOWN ON PLANS ARE FROM AVAILABLE RECORDS. CONTRACTOR SHALL FIELD VERIFY LOCATIONS AND RECONNECT ACCORDINGLY.
- THE SAWS INSPECTOR SHALL INSTRUCT CONTRACTOR OF CHANGES THAT MAY BE ALLOWED IN THE EVENT OF CONFLICTS
- ALL LATERALS SHALL BE RECONNECTED WHETHER SHOWN OR NOT SHOWN ON PLANS (N.S.P.I.)
- THE ESTIMATED VERTICAL REHAB FEET OF EXISTING MANHOLES ARE DERIVED FROM EXISTING RECORDS. THE EXACT VERTICAL FEET SHALL BE DETERMINED IN THE FIELD AND QUANTITIES ADJUSTED AND APPROVED BY SAWS ENGINEER.
- CONTRACTOR MUST NOTIFY AND/OR CONTACT SAWS INSPECTIONS OF 233-3500 AND SAWS ENGINEERING AT 233-3589 48 HOURS BEFORE ANY OF THE FOLLOWING ACTIVITIES TAKE PLACE:
 - NOTIFICATION OF PRE-TELEVISION INSPECTION.
 - NOTIFICATION OF BYPASS PUMPING SETUP OPERATIONS.
 - NOTIFICATION OF THE PIPE INSTALLATION
- CONTRACTOR MUST FIELD VERIFY ALL DEPTHS, DISTANCES AND GRADES BEFORE START OF CONSTRUCTION. (N.S.P.I.)
- IT SHALL BE THE RESPONSIBILITY OF THE CONTRACTOR TO LOCATE EXISTING UNDERGROUND UTILITIES PRIOR TO CONSTRUCTION ACTIVITIES.
- GAS LINES AND WATER LINES IN THE CLOSE PROXIMITY OF THE PROPOSED PIPE BURST ALIGNMENTS SHALL BE REPORTED TO SAWS INSPECTION. TYPICAL



ANY EXCAVATION WITHIN EXISTING PATCH WILL REQUIRE THE REPLACEMENT OF THE ENTIRE EXISTING PATCH COMBINED WITH ANY NEW EXCAVATION.

RESTORE PROPOSED CONSTRUCTION SITE TO ORIGINAL OR BETTER CONDITION ITEM No. 900.1

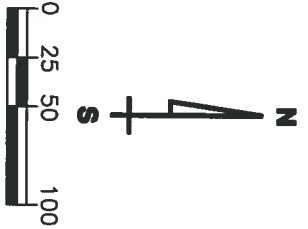
ANY EXCAVATION WITHIN EXISTING PATCH WILL REQUIRE THE REPLACEMENT OF THE ENTIRE EXISTING PATCH COMBINED WITH ANY NEW EXCAVATION.

WONDER PKWY. PCI-46 PAVEMENT TRENCH REPAIR SEE DETAIL 1 SHEET 34

MACE ST. PCI-35 PAVEMENT TRENCH REPAIR SEE DETAIL 1 SHEET 34

LEGEND

- ⊙ EXISTING MANHOLE
- MANHOLE SCHEDULED FOR REHAB
- SS — EXISTING SEWER MAIN PIPE
- PROPOSED SEWER MAIN PIPE BURST



13-4806 PLAN OF RECORD

Job Completion Date: December 23, 2014

San Antonio Water System
SMALL DIAMETER REHABILITATION PROGRAM
System Site V

DATE: SEPTEMBER 2013
 Designed by: GDG and MSG
 Drawn by: ELS
 Checked by: MSG
 Approved by: GGG
 GGI Project No.:
 SAWS Project No.: 13-4806
 SCALE: 1"=100'

DEVELOPER: SAN ANTONIO WATER SYSTEM
 BUDGET PROJ. #

MAP NO. 154-002/154-598/152-004/4
 SECTION NO. 29
 JOB NO. 13-4806
 OF 36

No.	Date	Revisions	By

SAN ANTONIO WATER SYSTEM
SMALL DIAMETER REHABILITATION PROGRAM
SITE V - LOCATION G - DR No. 618
SANITARY SEWER IMPROVEMENTS
PLAN

San Antonio Water System

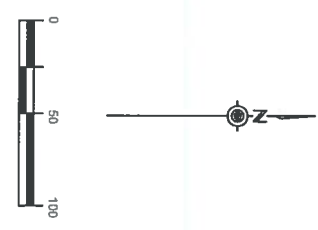
ENGINEERS
 GREG GOMEZ
 2006 Reg. No. 3481
 C.E. PROFESSIONAL ENGINEER

DATE: 9/7/2013
 MARIA S. GOMEZ
 97447
 C.E. PROFESSIONAL ENGINEER



- NOTES:
- CONTRACTOR MUST NOTIFY AND/OR CONTACT SAWS INSPECTION AT 210-233-3500 AND SAWS ENGINEERING AT 210-233-3493 48 HOURS BEFORE ANY OF THE FOLLOWING ACTIVITIES TAKE PLACE:
 - NOTIFICATION OF PRE-TELEVISION INSPECTION.
 - NOTIFICATION OF BYPASS PUMPING SETUP OPERATIONS.
 - NOTIFICATION OF THE PIPE INSTALLATION.
 - CONTRACTOR MUST FIELD VERIFY ALL DEPTHS, DISTANCES, PIPE SIZES AND GRADES BEFORE START OF CONSTRUCTION.
 - UTILITY MAPPING INFORMATION PROVIDED BY CPS ENERGY INDICATES A 2 INCH STEEL GAS MAIN MAY RUN PARALLEL AND/OR IN PROXIMITY TO THE SANITARY SEWER LINE TO BE REHABILITATED SHOWN ON THIS SHEET. PLEASE SEE NOTE 9 ON SHEET 1.

— PIPE BURSTING 467 L.F. OF 8" PIPE



RECORD DRAWING

THIS CONSTRUCTION DOCUMENT WAS PREPARED USING INFORMATION SUPPLIED BY THE CONTRACTOR TO REPRESENT THE DESIGN AND CONSTRUCTION OF THE PROJECT AND IS NOT INTENDED FOR BID, PERMIT OR CONSTRUCTION.

DATE: 06/21/16

14-4647 PLAN OF RECORD
JOB COMPLETION DATE: 06/21/16

14-4647 W.O. No. 2 DR 924

SEGMENT 2.1, 2.2
SEWER REHAB PLAN

K. FRIESE + ASSOCIATES
1129 S. Guild of Texas Highway
Arling, Texas 78146
Phone: 817-281-1100
Fax: 817-281-1794
www.kfriesea.com

STW
SAN ANTONIO
WATER SYSTEM

REPLACEMENTS & IMPROVEMENTS

DATE
08/11/16

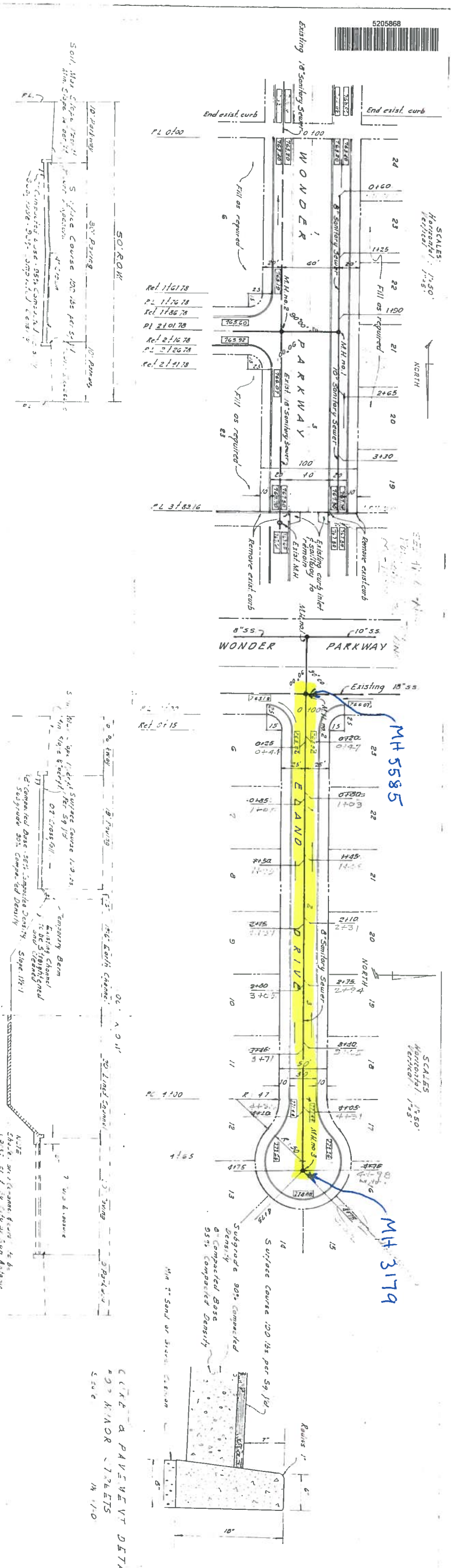
SHEET
2 OF 6

EXISTING WEST	GROUND TOP OF CURB & PROFILE		TOP OF CURB & PROFILE		760	765	770	775
	EAST	OUTSIDE	BOTH LANES	INSIDE				
762.2	763.3	763.40	762.88	763.29	769.00			
762.0	763.1	763.95	763.27	763.75	759.55			
762.4	763.8	764.51	764.03	764.31	760.11		759.24	
763.0	764.2	765.06	764.38	764.86	760.66		759.00	
762.8	763.9	765.61	764.93	765.41	761.21		759.54	
762.8	764.6	766.16	765.48	765.96	761.76		759.07	
763.5	764.9	766.72	766.04	766.52	762.32		759.23	
764.5	765	767.27	766.59	767.07	762.87		759.88	
766.5	767.4	767.70	767.02	767.50	763.42			
764.0	764.6	765.42	765.12	765.60	764.50		759.80	
765.1	766.0	766.09	765.04	765.29	764.90		759.46	
765.8	766.6	766.34	765.00	765.34	765.32		760.32	
766.9	767.5	766.59	765.34	765.59	761.97		762.59	
767.5	768.1	767.06	766.81	767.06	761.88		762.59	
768.5	769.1	767.99	767.74	767.99	762.59		763.35	
769.6	770.0	769.14	768.89	769.14	764.11		764.11	
770.5	771.0	770.29	770.04	770.29	764.86		764.86	
771.8	772.2	771.44	771.19	771.44	765.62		765.62	
772.2	773.0	772.59	772.34	772.59	766.38		766.38	
773.5	774.0	773.74	773.49	773.74	767.14		767.14	

SECTION THRU FLANK DRIVE

TYPICAL HALF SECTION SHOWING PAVING AND TEMPORARY CHANNEL

TYPICAL HALF SECTION SHOWING UPON ULTIMATE DRIVE IMPROVEMENT



W. F. CASTILLA & ASSOCIATES
 CONSULTING ENGINEERS
 SAN ANTONIO, TEXAS

STREET PLAN & PROFILE
 WONDER PARKWAY
 SUPERVISOR

DATE: 01-27-61
 SHEET: 2-2

CURT & PAVEMENT DETL
 P.D. MADOR - 1/26/61
 14 1/10



Televising Inspection

CompKey 966385

RunID	Inspection Date	Surveyor Name	Direction of Survey	MPEGPath	Length Surveyed	Reviewed By	Reviewed Date	Condition	Recommend Action
114000	11/23/2015	ACE CONTRACTORS	Downstream	\\hg-ssovideo-a1\data\ques_data\aries televising central database\central_video\contractor\ace job 14-141381\3179_downstream_5585_11-23-2015.mpg	492.8	MARIO JIMENEZ	02/18/2016	C - FAIR	MAINTAIN
Conditiona Code	Footage	Severity	Description	Percentage	Structural Score	Work Order	WO Priority	Comment	WO Completed
AMH	0		Access Point - Manhole					3179	
MWL	0			5					
SAP	0		Surface: Aggregate Projecting						
MWLS	39.7		Water Level: Sag	20					
MWLS	56.9		Water Level: Sag	20	6				
MWLS	56.9		Water Level: Sag	40					
SAP	56.9		Surface: Aggregate Projecting		33				
SAV	56.9		Surface: Aggregate Visible						
TF	61.5		Tap, Factory Made						
TF	67.3		Tap, Factory Made						
MWLS	71.3		Water Level: Sag	40	9				
MWLS	84.9		Water Level: Sag	25					
MWLS	94.9		Water Level: Sag	25	4				
TF	126.9		Tap, Factory Made						



Televising Inspection

ComplKey 966385

114000									
RFL	132.5	Roots, Fine: Lateral							
TF	132.5	Tap, Factory Made							
MWLS	188.2	Water Level: Sag	15						
TF	192	Tap, Factory Made							
TF	197.8	Tap, Factory Made							
MWLS	211.1	Water Level: Sag	15	10					
TF	260.2	Tap, Factory Made							
TF	266.1	Tap, Factory Made							
MWLS	282.2	Water Level: Sag	15						
MWLS	305.9	Water Level: Sag	15	10					
TF	322.5	Tap, Factory Made							
TF	328.4	Tap, Factory Made							
MWLS	344.6	Water Level: Sag	20						
MWLS	356.3	Water Level: Sag	20	4					
MWLS	377.6	Water Level: Sag	35						
TF	387.7	Tap, Factory Made							
MWLS	389	Water Level: Sag	35	6					
MWLS	393.4	Water Level: Sag	30						



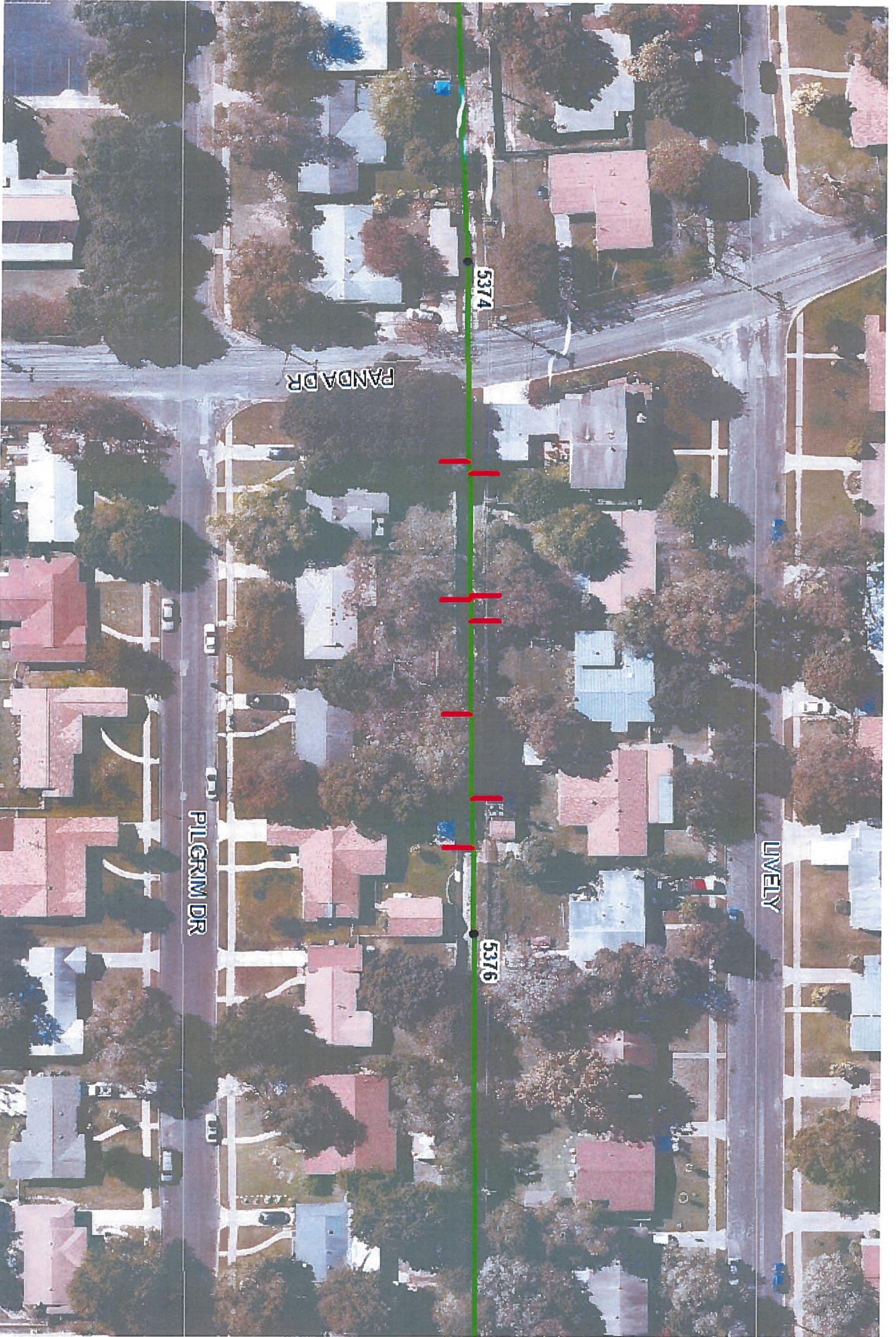
Televising Inspection

ComKey 966385

Conditiona Code	Footage	Severity	Description	Percentage	Structural Score	Work Order	WO Priority	Comment	WO Completed
AMH	0		Access Point - Manhole					Starting Manhole: 5585 going upstream to MH 3179	
MWL	0			5					

114000	TF	393.4	Tap, Factory Made						
MWLS	409.1	Water Level: Sag	30	6					
MWLS	420.9	Water Level: Sag	30						
MWLS	427.4	Water Level: Sag	30	2					
MWLS	433.3	Water Level: Sag	20						
MWLS	439.5	Water Level: Sag	20	2					
TF	449.8	Tap, Factory Made							
TF	452.8	Tap, Factory Made							
MWLS	453.2	Water Level: Sag	20						
MWLS	460	Water Level: Sag	20	2					
MWLS	475.5	Water Level: Sag	20						
MWLS	484	Water Level: Sag	20	4					
SAV	492.5	Surface: Aggregate Visible			261				
AMH	492.8	Access Point - Manhole						5585	

142103	08/02/2018	LUCIO, ERIC G	Upstream	42.8	ROBERT M JONES	09/12/2018	MAINTAIN
\\hq-video-01\cues_data\aries televising central_database\central_video\year_2018\148602-eland dr 022_1-3179-5585-08_02_2018-10_55 am.mpg							





Televising Inspection

CompKey 980555

RunID	Inspection Date	Surveyor Name	Direction of Survey	MPEGPath	Length Surveyed	Reviewed By	Reviewed Date	Condition	Recommend Action
114209	12/06/2015	ACE CONTRACTORS	Upstream	\\hg-sscovideo-a1\data\cues_data\aries televising central database\central_video\contractor\ace job 14-14138\5376_upstream_5376_12-6-2015.mpg	350	LAURA LOSOYA	02/25/2016	C - FAIR	MAINTAIN

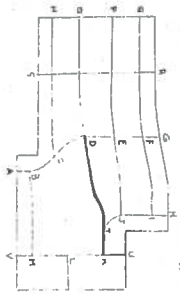
Conditiona Code	Footage	Severity	Description	Percentage	Structural Score	Work Order	WO Priority	Comment	WO Completed
AMH	0		Access Point - Manhole					AMH MH_5376 / START INSPECTION	
MWL	0			20					
MWL	5.7			60					
MWL	13.7			20					
ISGT	18		Intruding Seal Material - Grout	5					
ISGT	21.8		Intruding Seal Material - Grout	5					
TF	45.2		Tap, Factory Made						
TFC	48.3		Tap, Factory Made: Capped						
JOM	54.8		Joint Offset (displaced): Medium		1				
MWL	54.8			30					
TB	70.7		Tap, Break-in / Hammer						
TF	114.5		Tap, Factory Made						
ISGT	117.5		Intruding Seal Material - Grout	5					
TFC	117.5		Tap, Factory Made: Capped						



Televising Inspection

CompKey 980555

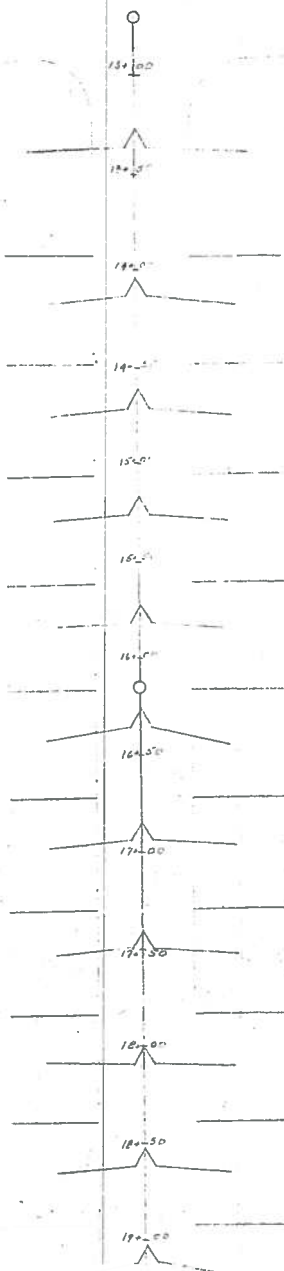
114209	TF	162.7		Tap, Factory Made									
	TF	174.7		Tap, Factory Made									
	TF	176.5		Tap, Factory Made									
	TFC	177.5		Tap, Factory Made: Capped									
	TFA	239.9		Tap, Factory Made: Active									
	TF	246.3		Tap, Factory Made									
	TFC	249.7		Tap, Factory Made: Capped									
	MWL	331.2											
	AMH	350		Access Point - Manhole								AMH MH_5374 / END INSPECTION	
142060	08/01/2018	LUCIO, ERIC G	Downstream	\\hq-video-01\cues_data\aries televising central database\central video\year_2018\146608-panda-dr-009-2-5374-5376-08-01-2018-8-01-am.mpg				168	ROBERT M JONES	10/29/2018	C - FAIR	MAINTAIN	
Conditiona Code	Footage	Severity	Description	Percentage	Structural Score	Work Order	WO Priority	Comment	WO Completed				
AMH	0		Access Point - Manhole					Starting Manhole: 5374 going downstream to MH 5376					
MWL	0			5									
TF	95.9		Tap, Factory Made										
TF	98.8		Tap, Factory Made										
TBA	104.6		Tap, Break-in / Hammer: Active										
TF	166.6		Tap, Factory Made										
TBA	167.8		Tap, Break-in / Hammer: Active										



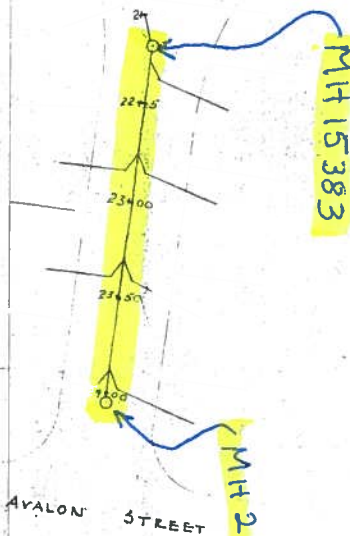
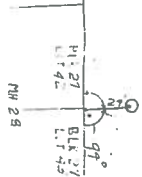
PLANS

149	148	147	146	145	144	143	142	141	140	139	138	137	136	135	134	133	132	131	130	129	128	127	126	125	124	123	122	121	120	119	118	117	116	115	114	113	112	111	110	109	108	107	106	105	104	103	102	101	100	99	98	97	96	95	94	93	92	91	90	89	88	87	86	85	84	83	82	81	80	79	78	77	76	75	74	73	72	71	70	69	68	67	66	65	64	63	62	61	60	59	58	57	56	55	54	53	52	51	50	49	48	47	46	45	44	43	42	41	40	39	38	37	36	35	34	33	32	31	30	29	28	27	26	25	24	23	22	21	20	19	18	17	16	15	14	13	12	11	10	9	8	7	6	5	4	3	2	1
149	148	147	146	145	144	143	142	141	140	139	138	137	136	135	134	133	132	131	130	129	128	127	126	125	124	123	122	121	120	119	118	117	116	115	114	113	112	111	110	109	108	107	106	105	104	103	102	101	100	99	98	97	96	95	94	93	92	91	90	89	88	87	86	85	84	83	82	81	80	79	78	77	76	75	74	73	72	71	70	69	68	67	66	65	64	63	62	61	60	59	58	57	56	55	54	53	52	51	50	49	48	47	46	45	44	43	42	41	40	39	38	37	36	35	34	33	32	31	30	29	28	27	26	25	24	23	22	21	20	19	18	17	16	15	14	13	12	11	10	9	8	7	6	5	4	3	2	1

WONDER PARKWAY



MILFORD DRIVE



AVALON STREET



WONDER HOMES ADDITION
PROJECT NO. 2
UNIT 2

SEWER GRADES
PROPOSED THROUGH DIBAK

PREPARED BY
WILLIAM ORRISON
ENGINEERS
& ASSOCIATES
SAN ANTONIO, TEXAS

ASSOCIATE
R.H. PARKINSON
SAN ANTONIO, TEXAS

DATE
15, 1990

NO.

04-8755
2-2



Televising Inspection

CompKey 972816

RunID	Inspection Date	Surveyor Name	Direction of Survey	MPEGPath	Length Surveyed	Reviewed By	Reviewed Date	Condition	Recommend Action	WO Completed
15784	09/05/2009	GARCIA, REMIGIO Z	Upstream	\\hq-ssovideo-a1\Data\ques_data\Aries Televising_Central Database\Video_Archived\Year_2009\150604-102_MILFORD DR-2842-15383.dvix	174	JAMES R SHIPLEY	09/13/2009	A - VERY GOOD	REVIEWED INSPECTION & VIDEO - NO ACTION NECESSARY - MAIN OVERALL IN GOOD CONDITION	
Conditiona Code	Footage	Severity	Description	Percentage	Structural Score	Work Order	WO Priority	Comment		
AMH	19.6		Access Point - Manhole		0			inside mh 2842 going to mh 15383		
MWL	21.2			5	0			perset 10		
TFA	21.8		Tap, Factory Made: Active		0					
TFA	23.6		Tap, Factory Made: Active		0					
TFA	25.3		Tap, Factory Made: Active		0					
TFA	68.1		Tap, Factory Made: Active		0					
TFA	71.6		Tap, Factory Made: Active		0					
TFA	119		Tap, Factory Made: Active		0					
TFA	121.9		Tap, Factory Made: Active		0					
TFA	163.7		Tap, Factory Made: Active		0					
TFA	166.8		Tap, Factory Made: Active		0					
AMH	174		Access Point - Manhole		0			at mh 15383 end of inspection		



Televising Inspection

CompKey 972816

64426

07/05/2013 ACE
CONTRACTOR

Downstream

\\hq-sscvideo-a1\Data\ques_data\Aries Televising_Central Database\Central Video\Contractor\Ace Job 13-1306\2842_downstream_15383_7-5-2013.mpg

176.1

RAMON CASTRO

01/14/2014

C - FAIR MAINTAIN

Conditiona Code	Footage	Severity	Description	Percentage	Structural Score	Work Order	WO Priority	Comment	WO Completed
AMH	0		Access Point - Manhole					US START INSPECTION	
MWL	0			25					
SAVZ	0		D						
TFA	23.3		Tap, Factory Made: Active						
TFC	26.4		Tap, Factory Made: Capped						
TBI	27.4		Tap, Break-in / Hammer: Intruding						
CC	64.5		Crack Circumferential		1				
CC	67.6		Crack Circumferential		1				
TFA	71.1		Tap, Factory Made: Active						
FL	72.9		Fracture Longitudinal		3				
TFA	73.9		Tap, Factory Made: Active						
TFA	121.9		Tap, Factory Made: Active						
TFA	124.6		Tap, Factory Made: Active						
CC	163.5		Crack Circumferential		1				
TFA	164.2		Tap, Factory Made: Active						
TFC	166.3		Tap, Factory Made: Capped						



Televising Inspection

CompKey 972816

64426	TFA	169.6		Tap, Factory Made: Active							
	AMH	176.1		Access Point - Manhole						DS END INSPECTION	
	SAVZ	176.1		D		105					

133127	08/23/2017	LUCIO, ERIC G	Downstream	\\hqc-video-01\gues_data\aries televising central_database\central_video\year_2017\150604-milford_dir_001_1-2842-15383-08_23_2017-4_49_pm.mpg				175.6	ROBERT M JONES	10/09/2017	D - POOR	REHAB	
Conditiona Code	Footage	Severity	Description	Percentage	Structural Score	Work Order	WO Priority	Comment	WO Completed				
AMH	0		Access Point - Manhole					Starting Manhole: 2842 going downstream to MH 15383					
MWL	0			5									
TB	23.4		Tap, Break-in / Hammer										
TF	26		Tap, Factory Made										
TBA	27.7		Tap, Break-in / Hammer: Active										
CM	46.8		Crack MultipleCM T		3								
CM	52.7		Crack MultipleCM T		3								
CM	65.7		Crack MultipleCM T		3								
TB	71.2		Tap, Break-in / Hammer										
CM	73.8		Crack MultipleCM T		3								
TB	74.4		Tap, Break-in / Hammer										
CM	112.2		Crack MultipleCM T		3								
TB	122		Tap, Break-in / Hammer										



Televising Inspection

CompKey 972816

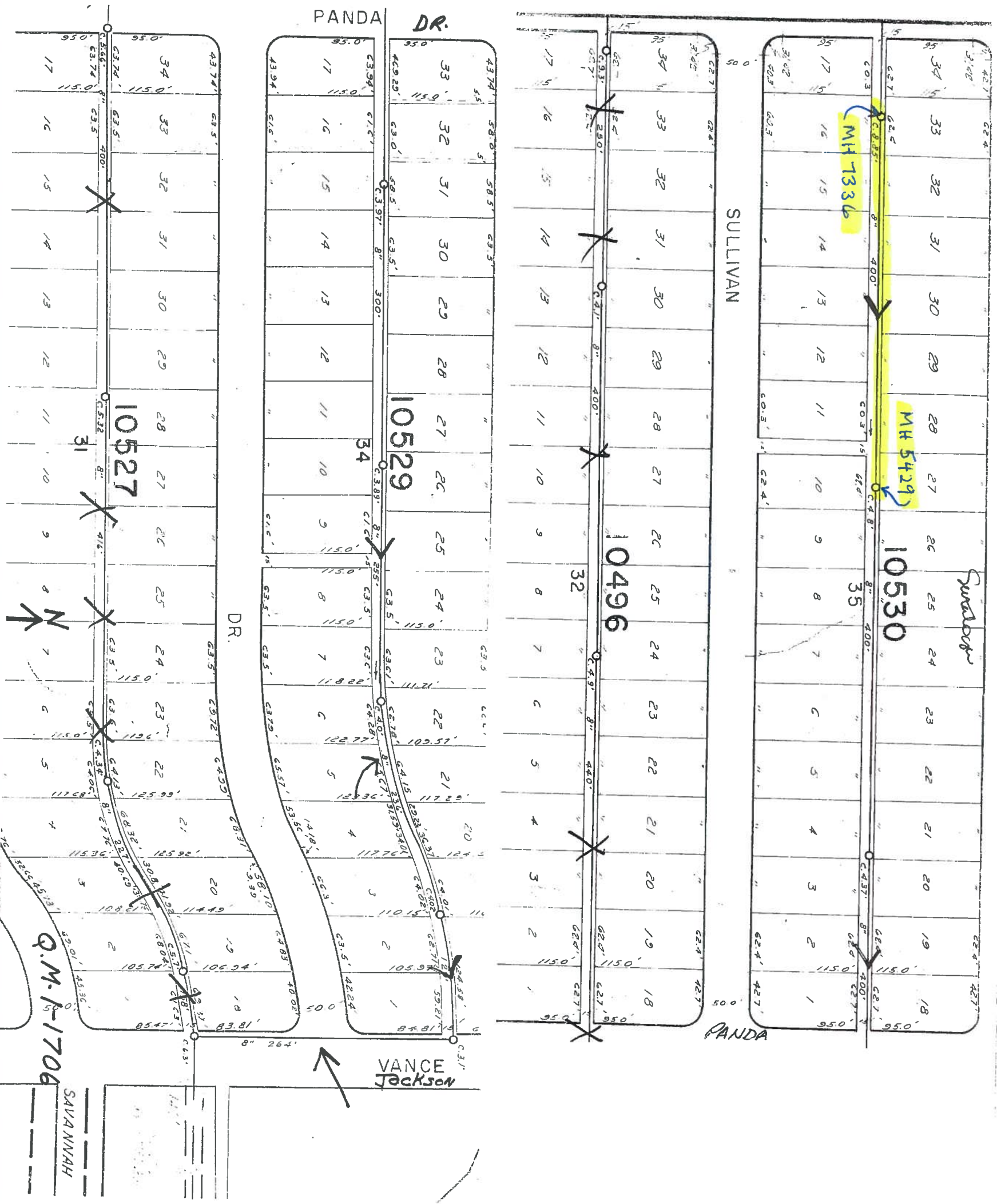
133127	124.6	160.3	164.4	167.1	169.8	175.6												
TB	124.6						Tap, Break-in / Hammer											
CM	160.3						Crack MultipleCM T			3								
TB	164.4						Tap, Break-in / Hammer											
TB	167.1						Tap, Break-in / Hammer											
TB	169.8						Tap, Break-in / Hammer											
AMH	175.6						Access Point - Manhole											End Inspection Inside MH# 15383

142105 08/02/2018 LUCIO, ERIC G Upstream [\\hqr-video-01\cues_data\aries televising central database\central video\year 2018\150604-milford dr 001_1-2842-15383-08_02_2018-8_53_amm.mpg](#) 49 ROBERT M JONES 09/12/2018 MAINTAIN

Conditiona Code	Footage	Severity	Description	Percentage	Structural Score	Work Order	WO Priority	Comment	WO Completed
AMH	0		Access Point - Manhole					Starting Manhole: 15383 going upstream to MH 2842	
MWL	0			5					
MGO	49		General Observation					Dye intruding through lateral	
MSA	49		Survey Abandoned					Abandon inspection, dye test complete.	
TFA	49		Tap, Factory Made: Active						



5207024



0M-5251
3-5



Televising Inspection

CompKey 965440

RunID	Inspection Date	Surveyor Name	Direction of Survey	MPEGPath	Length Surveyed	Reviewed By	Reviewed Date	Condition	Recommend Action
113675	11/23/2015	ACE CONTRACTORS	Downstream	\\hq-ssovideo-a1\data\ques_data\aries televising central database\central_video\contractor\ace.job 14-1413817336_downstream_5429_11-23-2015.wmv	397.7	LAURA LOSOYA	02/13/2016	C - FAIR	MAINTAIN

Conditiona Code	Footage	Severity	Description	Percentage	Structural Score	Work Order	WO Priority	Comment	WO Completed
AMH	0		Access Point - Manhole					SURVEY BEGINS IN MANHOLE 7336	
MWL	0			5					
SRI	0		Surface: Roughness Increased						
TF	12.6		Tap, Factory Made						
TFC	15.8		Tap, Factory Made: Capped						
TB	25.3		Tap, Break-in / Hammer						
TFC	75.5		Tap, Factory Made: Capped						
TF	78.6		Tap, Factory Made						
TBA	81.7		Tap, Break-in / Hammer: Active						
TB	129.8		Tap, Break-in / Hammer						
TFC	135.7		Tap, Factory Made: Capped						
TFC	138.7		Tap, Factory Made: Capped						
TBA	144.9		Tap, Break-in / Hammer: Active						
RFJ	161.8		Roots, Fine: Joint						



Televising Inspection

CompKey 965440

113675

RFJ	170.6		Roots, Fine: Joint					
RFJ	173.3		Roots, Fine: Joint					
RFJ	194.8		Roots, Fine: Joint					
TFC	199		Tap, Factory Made: Capped					
TF	202.4		Tap, Factory Made					
TB	208.1		Tap, Break-in / Hammer					
TB	256.2		Tap, Break-in / Hammer					
TF	262.2		Tap, Factory Made					
TF	265		Tap, Factory Made					
TB	268.2		Tap, Break-in / Hammer					
FC	325.5		Fracture Circumferential		2			
TF	325.5		Tap, Factory Made					
TF	328.4		Tap, Factory Made					
TF	388.6		Tap, Factory Made					
TF	391.7		Tap, Factory Made					
SRI	394.9		Surface: Roughness Increased		79			
AMH	397.7		Access Point - Manhole					
								SURVEY ENDS IN MANHOLE 5429



Televising Inspection

ComKey 972817

RunID	Inspection Date	Surveyor Name	Direction of Survey	MPEGPath	Length Surveyed	Reviewed By	Reviewed Date	Condition	Recommend Action
64905	07/27/2013	ACE CONTRACTOR	Upstream	\\hq-video-01\cues_data\Aries Televising Central Database\Video_Archived\Contractors\Ace Job 13-1428 Clay Concrete\2629_upstream_7512_7-27-2013.mpg	304.5	ERIN MILLS	12/27/2013	A - VERY GOOD	MAINTAIN
Conditiona Code	Footage	Severity	Description	Percentage	Structural Score	Work Order	WO Priority	Comment	WO Completed
AMH	0		Access Point - Manhole					7512	
MWL	0			5					
TB	24.5		Tap, Break-in / Hammer						
TF	29		Tap, Factory Made						
TFC	30.4		Tap, Factory Made: Capped						
TFC	39.6		Tap, Factory Made: Capped						
TB	49.2		Tap, Break-in / Hammer						
TB	79		Tap, Break-in / Hammer						
FM	83		Fracture Multiple		4				
TF	87.9		Tap, Factory Made						
TFC	96.7		Tap, Factory Made: Capped						
CC	112.5		Crack Circumferential		1				
CM	128.3		Crack MultipleCM T		3				
TBA	128.8		Tap, Break-in / Hammer: Active						

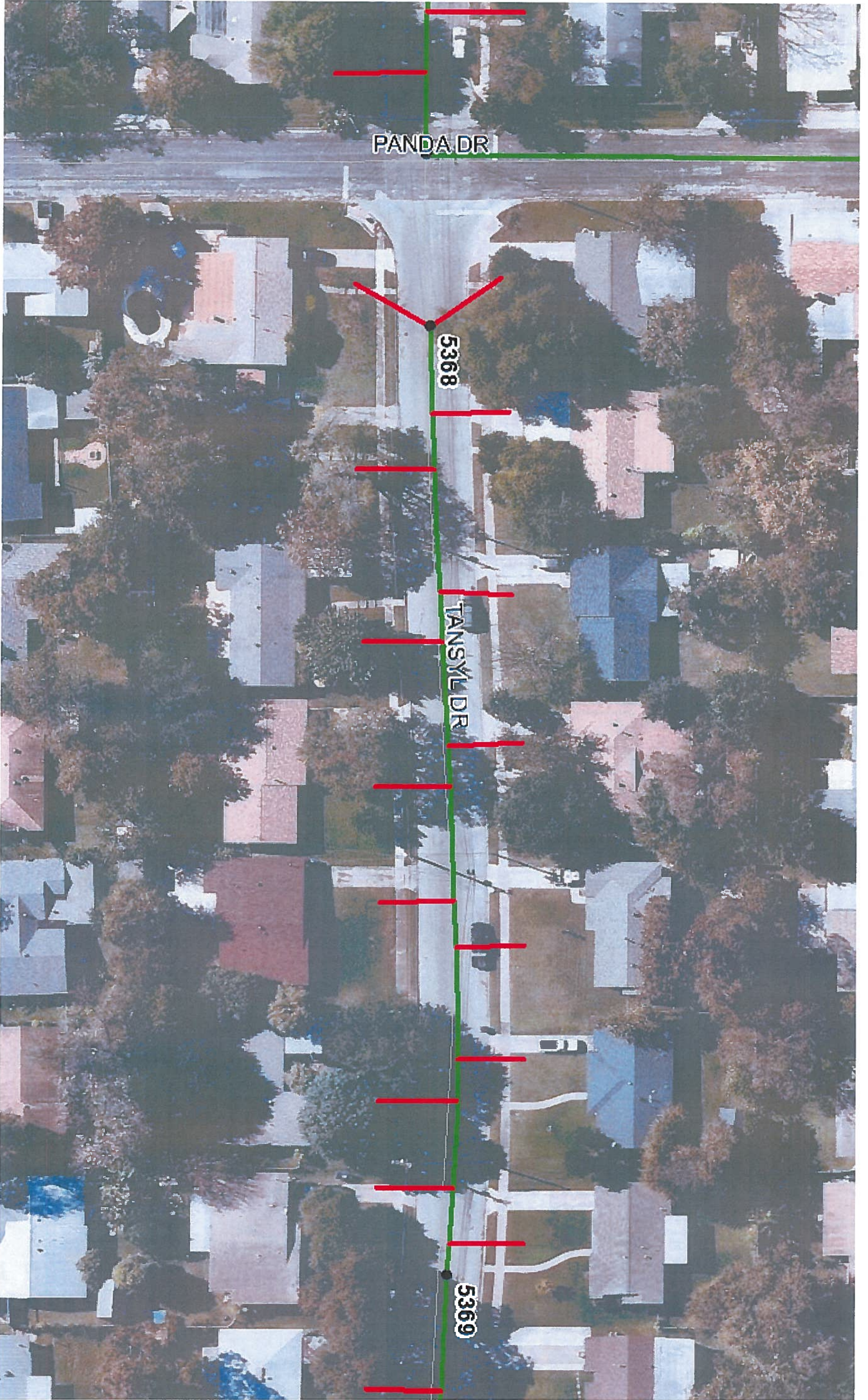


Televising Inspection

ComplKey 972817

64905

FL	129	Fracture Longitudinal		3			
TFC	139	Tap, Factory Made: Capped					
TFC	147.9	Tap, Factory Made: Capped					
CL	149.3	Crack Longitudinal		2			
TB	151.5	Tap, Break-in / Hammer					
TB	160.6	Tap, Break-in / Hammer					
TF	184.2	Tap, Factory Made					
TF	196.4	Tap, Factory Made					
TFC	205.3	Tap, Factory Made: Capped					
TF	250.8	Tap, Factory Made					
CL	251.6	Crack Longitudinal		2			
TF	252.5	Tap, Factory Made					
TFC	259.8	Tap, Factory Made: Capped					
TF	297.8	Tap, Factory Made					
TF	299.1	Tap, Factory Made					
CC	302.3	Crack Circumferential		1			
AMH	304.5	Access Point - Manhole				2629	



PANDA DR

5368

TANBYL DR

5369



Televising Inspection

CompKey 965370

RunID	Inspection Date	Surveyor Name	Direction of Survey	MPEGPath	Length Surveyed	Reviewed By	Reviewed Date	Condition	Recommend Action
102661	05/06/2015	ACE CONTRACTORS	Downstream	\\hg-ssovideo-a1\Data\ques_data\Aries Televising_Central Database\Central Video\Contractor\Ace Job 14-14138\5368_downstream_5369_5-6-2015.mpg	405	JAVIER ESQUIVEL	06/24/2015	B - GOOD	MAINTAIN
Conditiona Code	Footage	Severity	Description	Percentage	Structural Score	Work Order	WO Priority	Comment	WO Completed
AMH	0		Access Point - Manhole	0				USMH 5368	
MWL	0			5					
TF	53.7		Tap, Factory Made	0					
TF	56.7		Tap, Factory Made	0					
TF	113.3		Tap, Factory Made	0					
TF	116.4		Tap, Factory Made	0					
TF	182.7		Tap, Factory Made	0					
TF	185.8		Tap, Factory Made	0					
H	189.5		HOLE	0	3				
TF	245.9		Tap, Factory Made	0					
TF	248.7		Tap, Factory Made	0					
TF	314.8		Tap, Factory Made	0					
TF	317.9		Tap, Factory Made	0					
TF	377.7		Tap, Factory Made	0					



Televising Inspection

CompKey 965370

102661	TF	380.7		Tap, Factory Made	0							
	AMH	405		Access Point - Manhole	0					DSMH 5369		

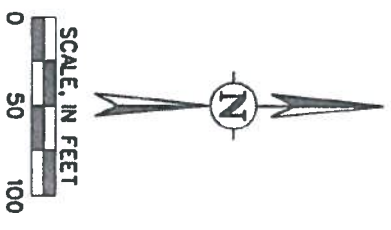
Conditiona Code	Footage	Severity	Description	Percentage	Structural Score	Work Order	WO Priority	Comment	WO Completed
AMH	0		Access Point - Manhole					Starting Manhole: 5368 going downstream to MH 5369	
MWL	0			5					
TFA	51.5		Tap, Factory Made: Active						
TFA	53.5		Tap, Factory Made: Active						
TF	110.5		Tap, Factory Made						
TF	113.3		Tap, Factory Made						
MSA	178.5		Survey Abandoned					Abandon inspection, no dye visible.	
TF	179.1		Tap, Factory Made						
TF	182		Tap, Factory Made						
B	185.9		Pipe Broken		5				
TF	242.3		Tap, Factory Made						
TF	245.3		Tap, Factory Made						

142015 07/31/2018 LUCIO, ERIC G Downstream [\\hq-video-01\cues_data\aries_televising_central_database\central_video\year_2018\146608-tansyl_dr_00171-5368-5369-07_31_2018-9_57.am.mpg](#) 245.3 MARIO JIMENEZ 08/30/2018

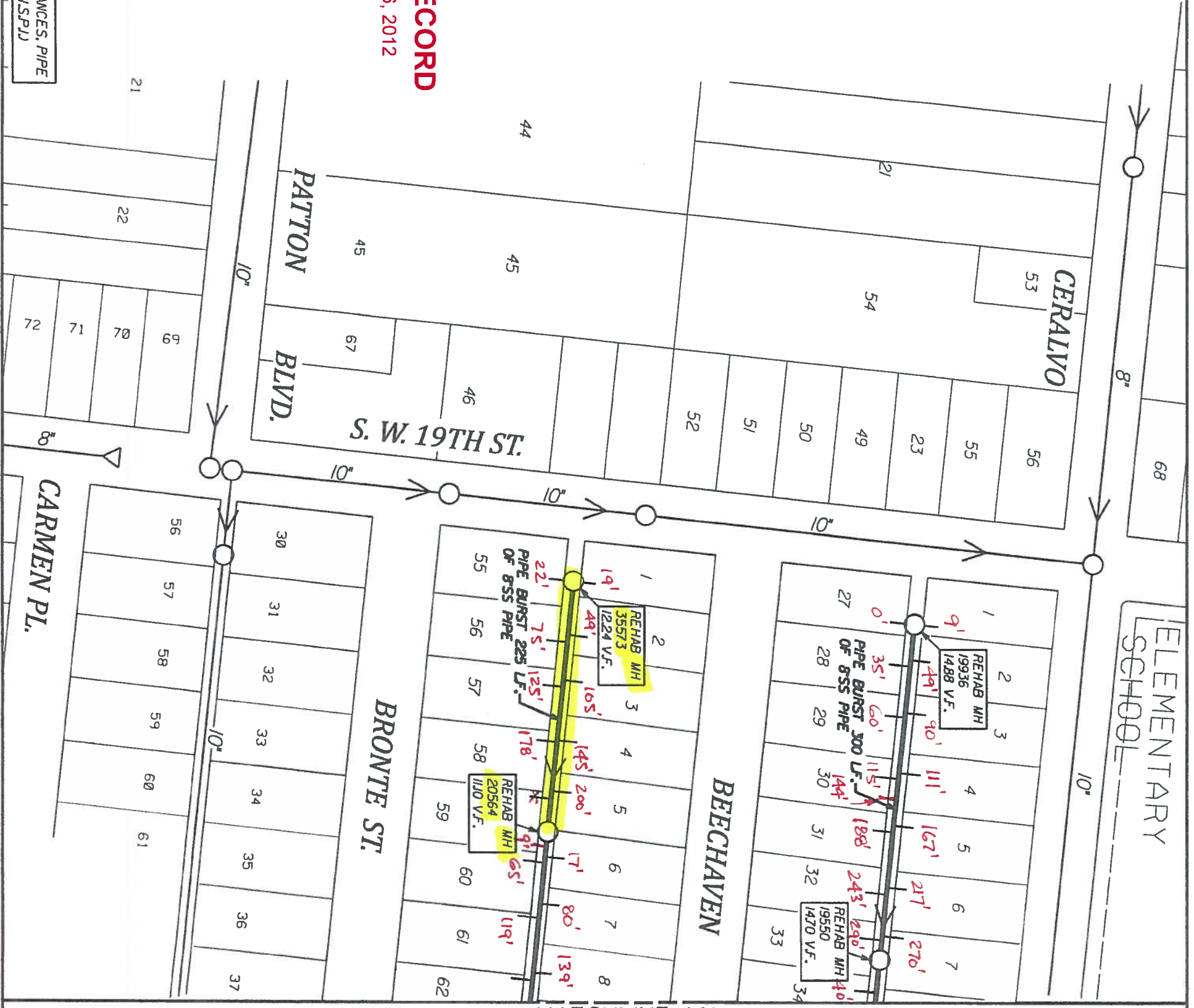
ELEMENTARY SCHOOL

LEGEND

PROP. SAN SEWER	—○—
EXISTING SAN. SEWER	—○—
WATER MAIN	—○—
GAS MAIN	—○—
STORM SEWER	—○—
EXISTING UTILITY POLE	—○—
UNDERGROUND ELEC.	—○—
UNDERGROUND TELE.	—○—



MATCHLINE 'A'



12-2514.19 PLAN OF RECORD

Job Completion Date: September 26, 2012

Contractor must notify and/or contact SAWS Inspections at 233-3500 and SAWS Engineering at 233-3493 48 hours before any of the following activities take place.

1. Notification of Pre-Television Inspection.
2. Notification of Bypass Pumping setup operations.
3. Notification of the Pipe installation.

NOTE: CONTRACTOR MUST FIELD VERIFY ALL DEPTHS, DISTANCES, PIPE SIZES AND GRADES BEFORE START OF CONSTRUCTION. (N.S.P.I.)

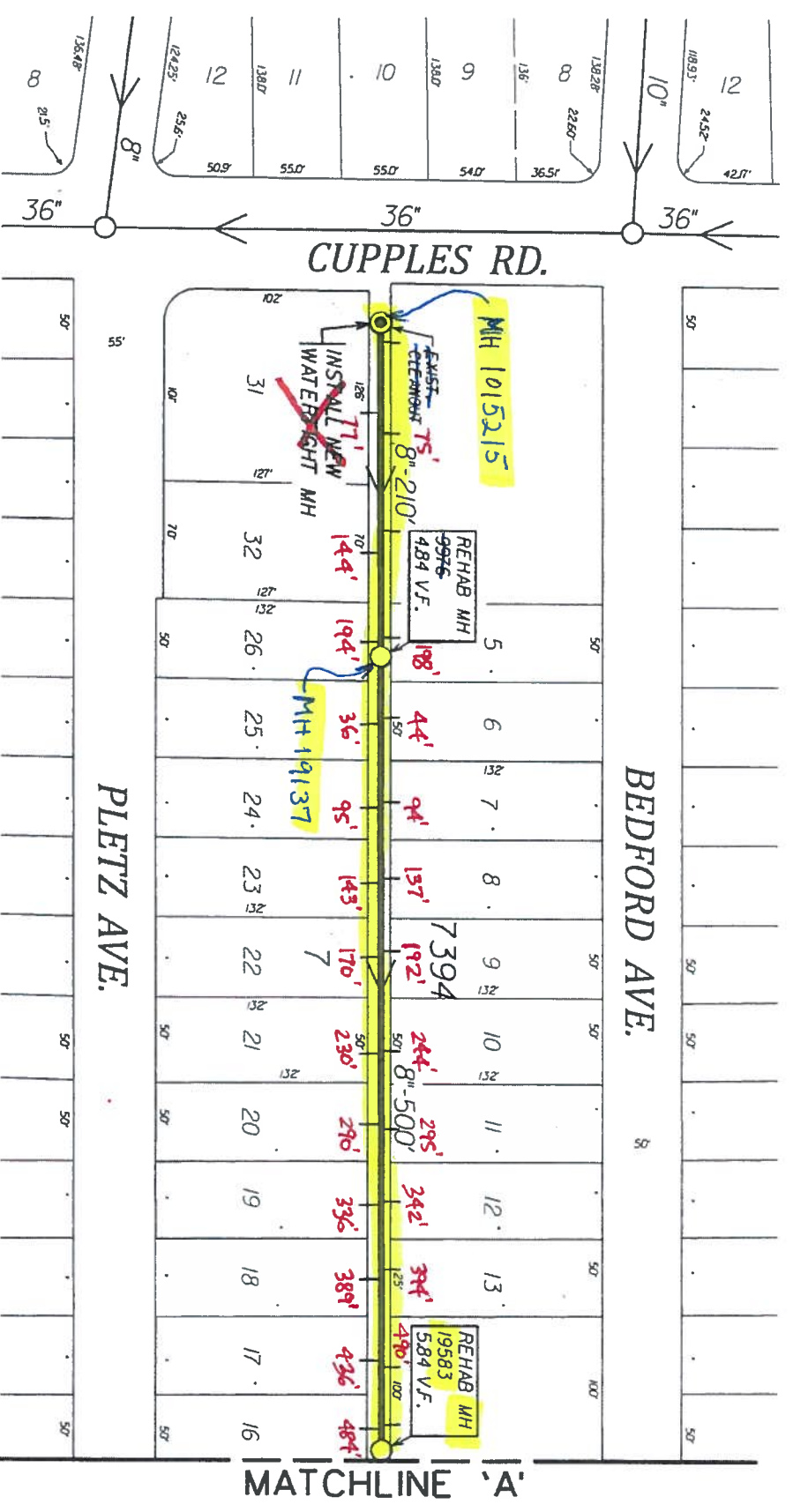
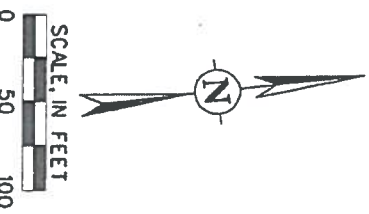
JOB NO. 12-2514	
2012 REHABILITATION WORK	
ORDER CONSTRUCTION	
CONTRACT - W.O. #19	
BECHAVEN	
DR. A.F.D.	DATE
DR. S.L.G.	Dec 07, 2011
DR. S.L.G.	
BLK. M/A	SHEET
	2 OF 3

SANDRA L. GOMEZ
98284
PROFESSIONAL ENGINEER
STATE OF TEXAS
LICENSURE

Sueley & Bonney
12/28/12

LEGEND

PROP. SAN SEWER	— 8" — 55'
EXISTING SAN. SEWER	— 8" — 55'
WATER MAIN	— 0-6" C.I.W. — 8"
GAS MAIN	— 2" — 0"
STORM SEWER	— 24" — 51"
EXISTING UTILITY POLE	— 0"
UNDERGROUND ELEC.	— UE —
UNDERGROUND TELE.	— UT —



— PIPE BURST 710 L.F. OF 8" PIPE

Contractor must notify and/or contact SAWS Inspections at 233-3500 and SAWS Engineering at 233-3493 48 hours before any of the following activities take place.

1. Notification of Pre-Television Inspection
2. Notification of Bypass Pumping setup operations.
3. Notification of the Pipe installation.

NOTE: CONTRACTOR MUST FIELD VERIFY ALL DEPTHS, DISTANCES, PIPE SIZES AND GRADES BEFORE START OF CONSTRUCTION. (INSP11)

STATE OF TEXAS
 SANDRA L. GOMEZ
 98284
 LICENSED PROFESSIONAL ENGINEER
Sandra L. Gomez
 11/15/11

JOB NO. 11-2517	
2011 REHABILITATION WORK	
ORDER CONSTRUCTION	
CONTRACT, PHASE II - W.D. *21	
BEDFORD AVE.	
DR. IJR	DATE
DR. IJR	02/14/2011
CR. SLG	
CR. SLG	
BK. IJA	SHEET
144-566	2 OF 3

